

How to position EIB on animal

Jan 29, 2015

Electrode Interface Board (EIB)

Several customers had questions about interfacing the Electrode Interface Board (EIB) with the JAGA device on an animal. Below is a diagram of how you would place the EIB. You can attach the EIB with dental acrylic, and it is typically positioned vertically and usually does not contact the skull directly. There are 3-4 screws on the rat's skull and a mound of dental cement is piled on the rat's head, with the EIB embedded in the mound. The two holes in the side of the EIB are for alignment, *i.e.* to help people position their cannula vertically.

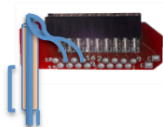
JAGA device



Male-male connector
between JAGA and EIB



EIB



Cover the EIB with Dental
cement during surgery



The EIB is reusable: you can soak the implant in acetone overnight to remove the dental acrylic and recover the EIB. You can order more EIBs from us if you use multiple animals.

Interfacing JAGA16 with EIB using connectors

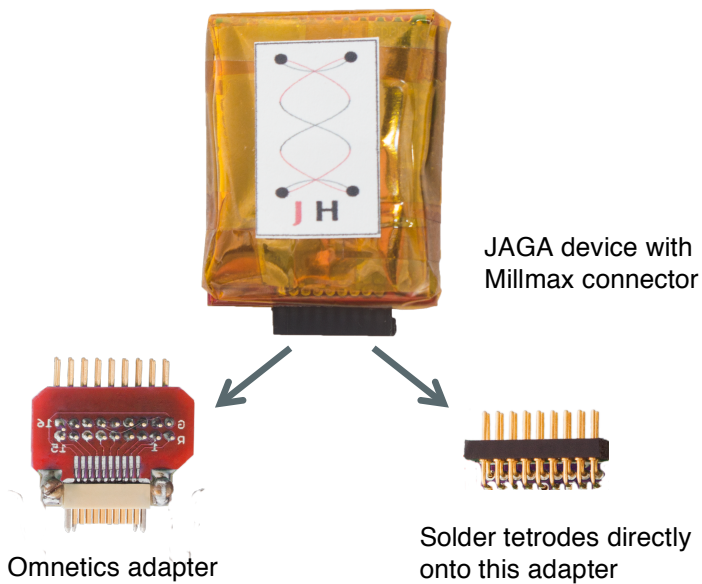
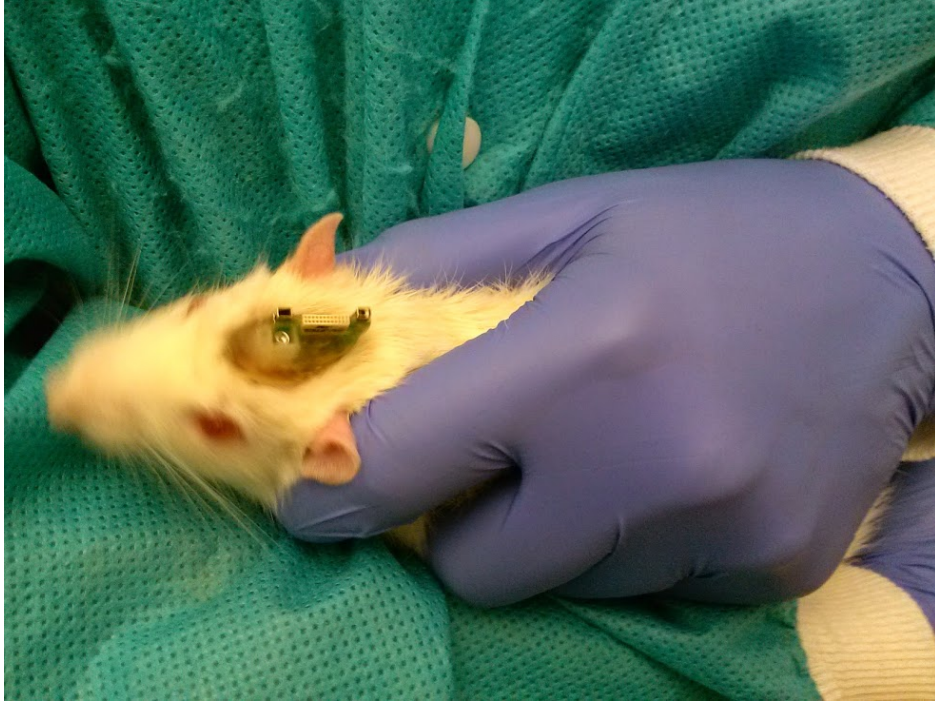


Photo of an EIB board on a rat

Once the surgery is done, the EIB board is not visible because it is encased in dental cement. Below, you can also see the connector facing up (Omnetics connector is shown here, but you can also use Millmax).



(Photo: Courtesy of Prof. Tom Jhou at Medical University of South Carolina)
