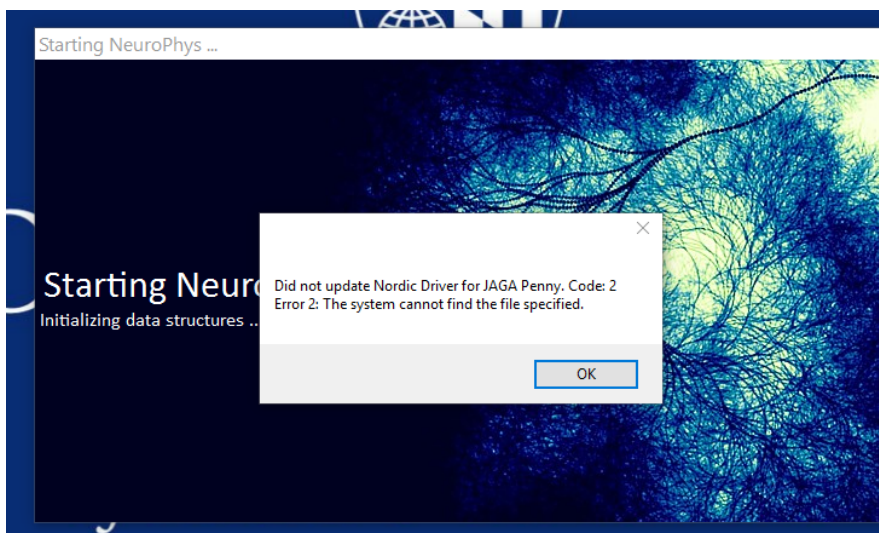


Errors on Quick Start JAGA Penny/NeuroPhys

v. 1a 2015-2017

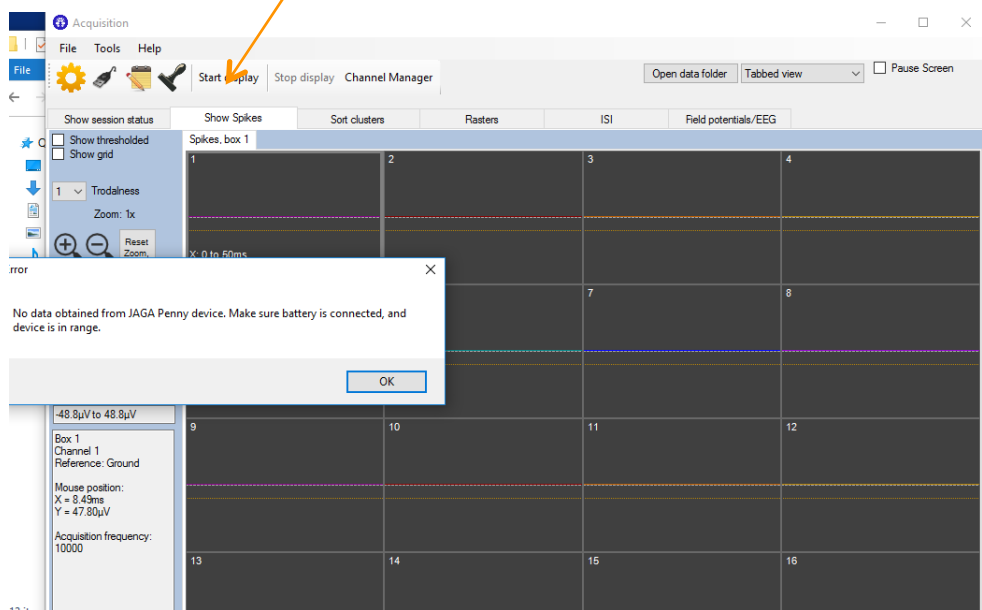
Possible Errors JAGA Penny Quick Start with NeuroPhys

- **Driver Installation Failed**



- Was JAGA Penny receiver USB installed? the Review how to install JAGA Penny receiver USB.pdf

- **No data obtained**



- **Make sure** to insert the USB receiver **before** You power JAGA penny device. (See Quick Start Guide for JAGA Penny)
- If you cannot obtain data from JAGA penny, do the following
 - Close the NeuroPhys program
 - Unplug the USB receiver
 - Remove the battery from the JAGA penny device
 - Plug the USB receiver
 - Start the NeuroPhys program
 - Power the JAGA penny device again
- If you still cannot obtain data from JAGA penny, make sure you click “Start display”